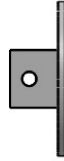
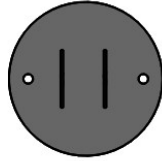
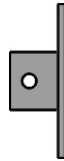
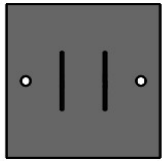


8" DIA.
WALL BRACKET



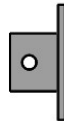
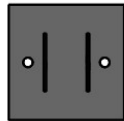
8"x8"
WALL BRACKET



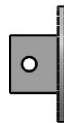
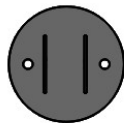
3"x6"
WALL BRACKET
(STANDARD)



6"x6"
WALL BRACKET



6" DIA.
WALL BRACKET



WALL BRACKET

2" SQ. OR 2" DIA.
ALUMINUM SUPPORT ROD

1/2" S.S. BOLT

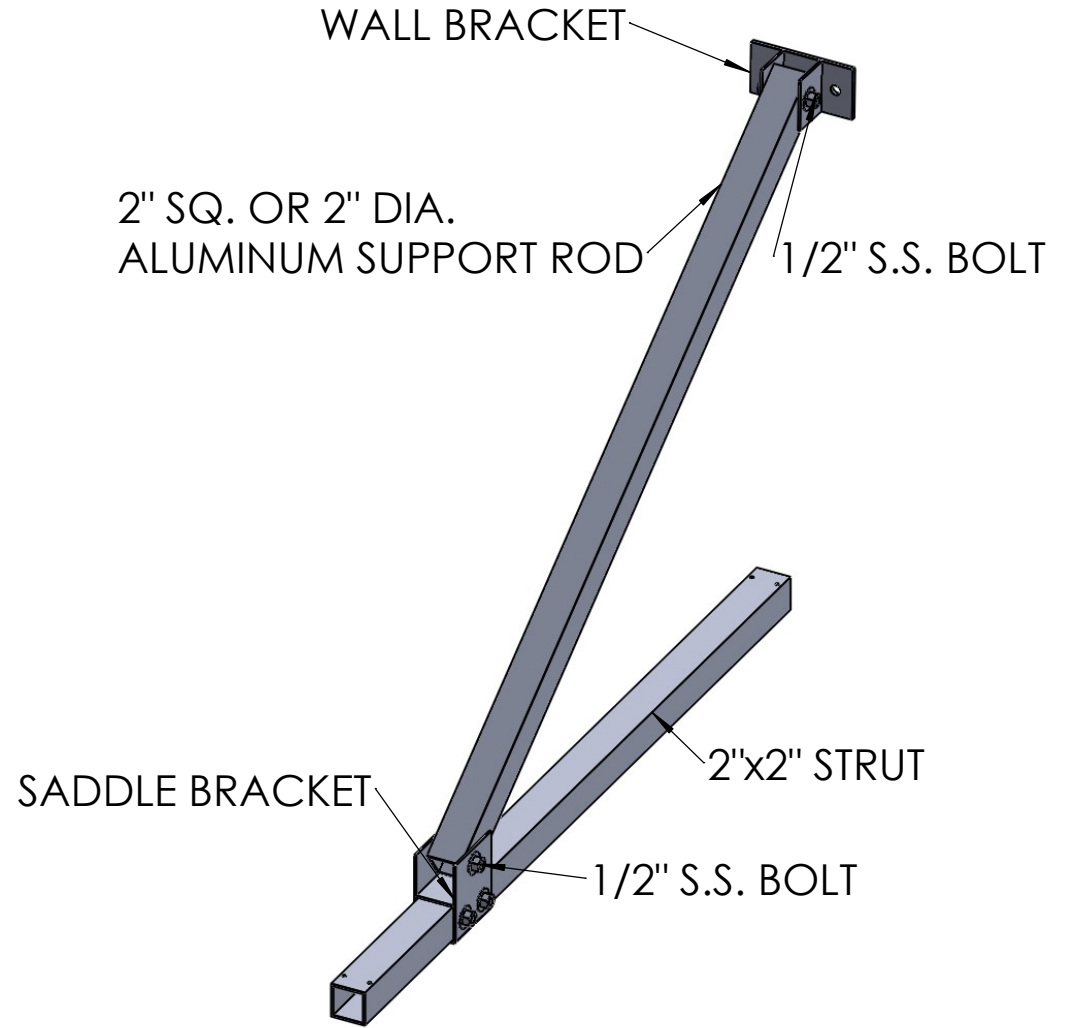
SADDLE BRACKET

2"x2" STRUT

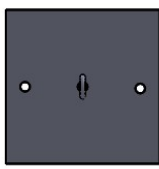
1/2" S.S. BOLT

STANDARD ASSEMBLY

NOTE: CUSTOM BRACKET
DESIGNS ARE AVAILABLE
UPON REQUEST

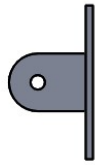
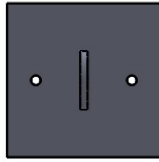


8"x8" WALL BRACKET
WITH EYEBOLT

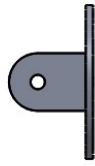
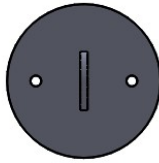


NOTE: CUSTOM BRACKET
DESIGNS ARE AVAILABLE
UPON REQUEST

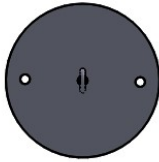
8"x8" WALL BRACKET



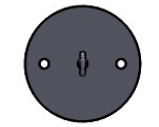
8" DIA. WALL BRACKET



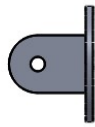
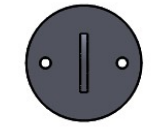
8" DIA. WALL BRACKET
WITH EYEBOLT



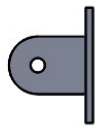
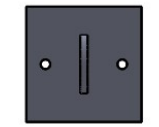
6" DIA. WALL BRACKET
WITH EYEBOLT



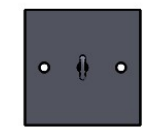
6" DIA. WALL BRACKET



6"x6" WALL BRACKET
(STANDARD)



6"x6" WALL BRACKET
WITH EYEBOLT



WALL BRACKET

GALV. STEEL CLEVIS
(PAINTED TO MATCH
CANOPY)

3/4" DIA. S.S.
BOLT

3/4" DIA. OR 1" DIA.
GALV. STEEL ROD
(PAINTED TO MATCH
CANOPY)

GALV. STEEL CLEVIS
(PAINTED TO MATCH
CANOPY)

2"x2" STRUT

SADDLE BRACKET

3/4" DIA. S.S.
BOLT

STANDARD ASSEMBLY

